



# FHsolar&led

We are  
good energy

## FH HIGH BAY

*Unprecedented one in industrial lighting*

**121.44**<sup>LM/W</sup>  
LM79

**99.68%**@ 50000  
hours

*Powerful Compact Efficiently*



■ AIR HANGAR OF LUFTHANSA-FRANKFURT AIRPORT



## FH HIGH BAY

DESIGNED LUMINAIRE, DESIGNED FLUX



### *5 years Loyalty with Philips*

The cooperation with Philips is all along the development of FH SOLAR & LED. The use of Philips Luxeon chip and Xitanium driver made it possible to build the Aurora high bay with very high standards in terms of technical features and design.

Moreover, the direct feedback by our existing customers, as well as the Philips' global experience in application helped us meet these requirements in a concept of global product & local care.





## FH HIGH BAY

PROFESSIONAL, SAFE, PERFORMANCE

### *Professional*

Born for LED industrial lighting, 5 years constant effort in high bay design, optimization and production. Thousands of luminaires in service all over the world. Never before has a manufacturer so focused and experienced.

### *Safe*

As The only manufacturer in China producing ENEC certified LED High bay and LED Flood light, we take safety always the first priority. It starts from the product design, and though along the production, shipment, installation, operation and maintenance.



### *Performance*

121.44lm/w system efficiency and 99.68% lumen maintenance at 50,000 hours set the impressively high record and standard for industrial lighting, undisputed King of performance. All measurements are done by the TUV SUD, accurate and reliable.



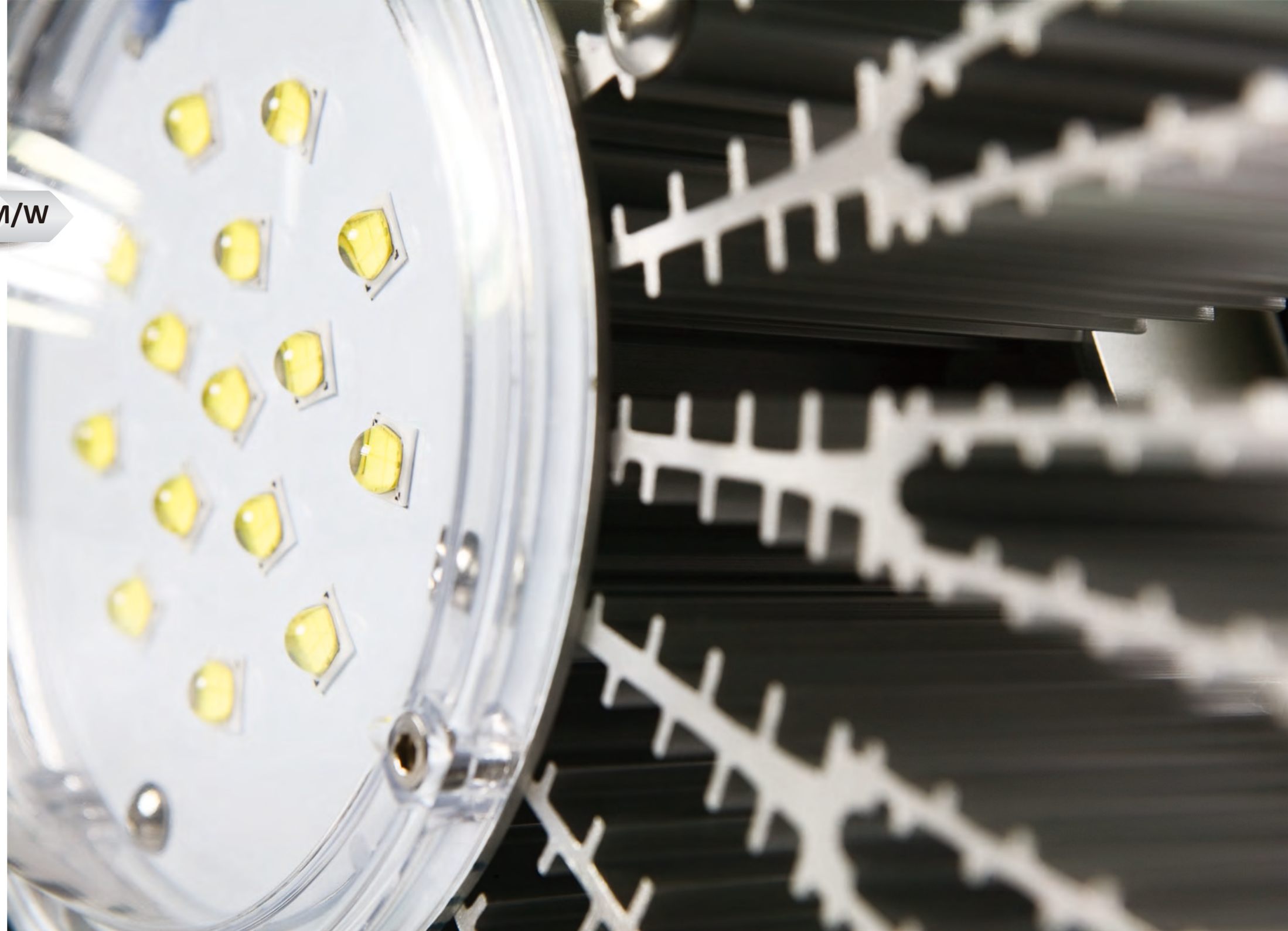
121.44LM/W

FH HIGH BAY

SECOND TO NONE IN EFFICIENCY

The luminaire's inner workings and appearance have been designed from scratch – this was the only way to make FH achieve its outstanding efficiency level. With Philips Luxeon M, up to 150lm/w hot efficiency, the best chip for industrial lighting, Aurora is able to create the zenith of efficiency.

The patent cooling system of aurora is the Key point of efficiency miracle. Integrated design, accurate calculation and seamless joint make it possible to happen.





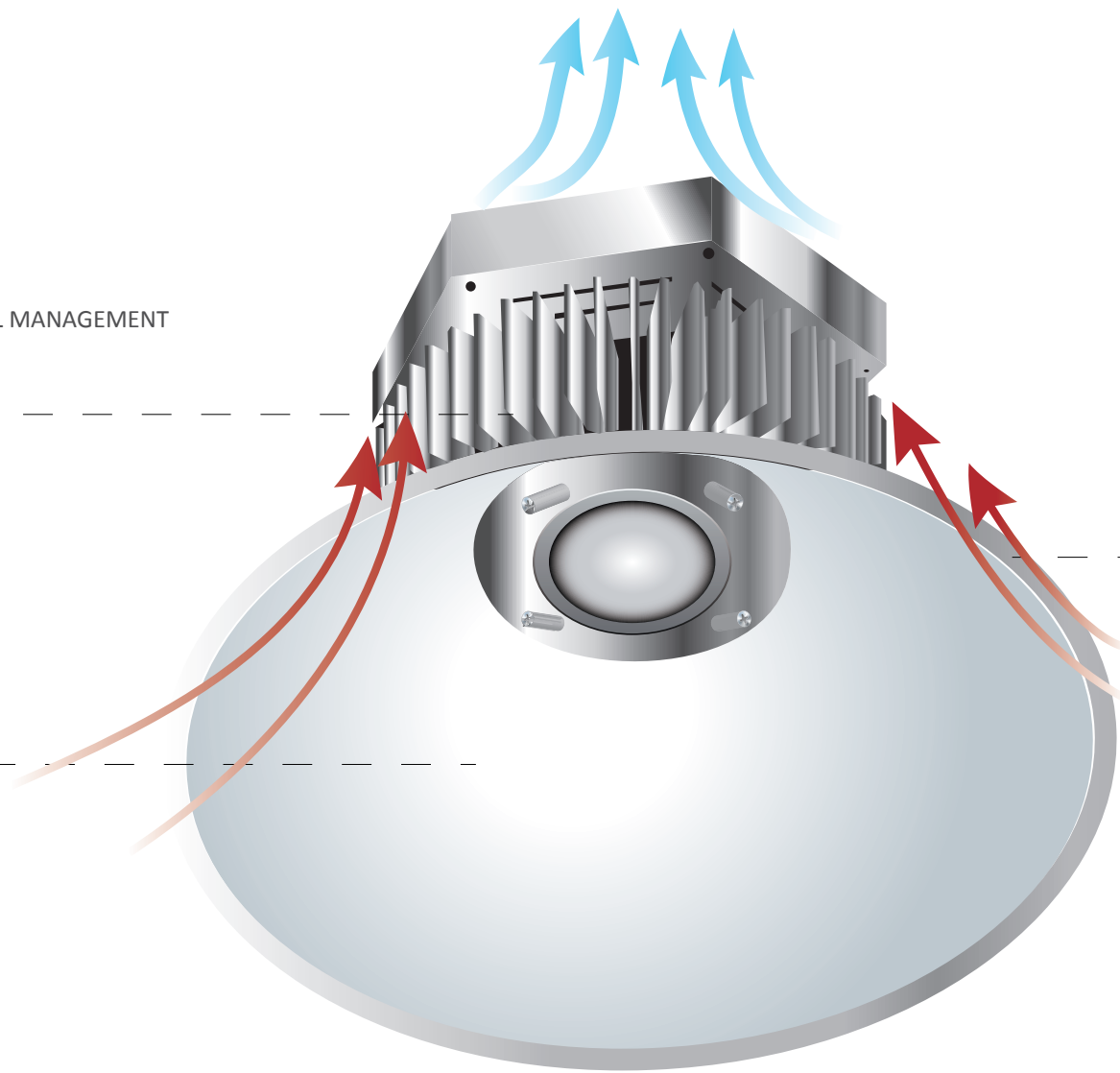
**FH HIGH BAY**  
ULTIMATE THERMAL MANAGEMENT

**280mm Cool housing**

The 6063 aluminum extrusion housing is both lightweight and rugged which create extra-large cooling area. The luminaire's thermal management is optimized by the patented housing design, as well as the heat pipe technology.

**Various beam angles**

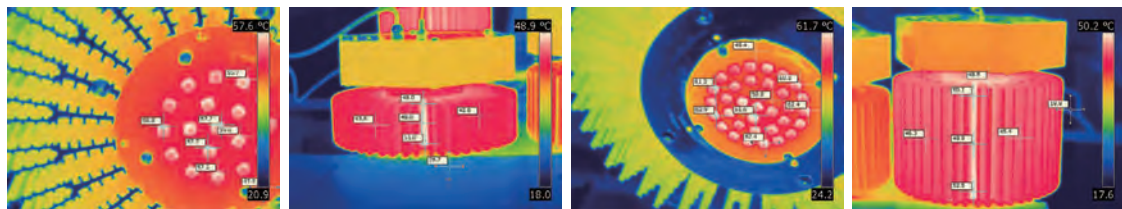
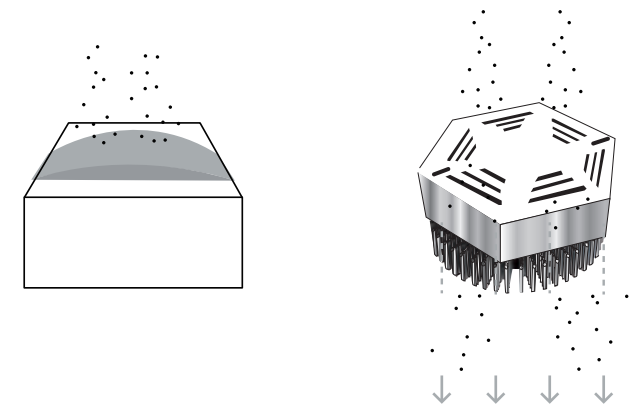
Different reflectors options. PC to aluminum, difference beam angle for difference application.



**AIR FLOW**

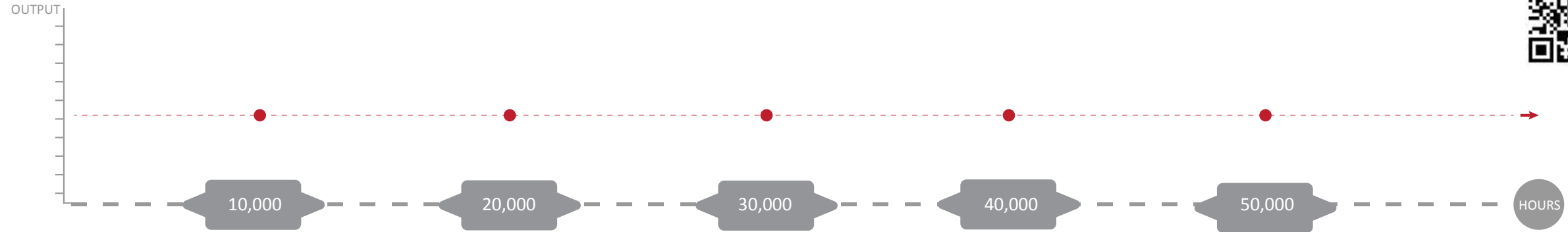
FH creates air flow through the luminaire. This sustainably protects the technical components from overheating and optimizes the luminaire's service life. The circulation of air, vertical luminaire surfaces and a ventilated driver box prevent accumulation of a dust layer impairing thermal management.

The circulation of air, vertical luminaire surfaces and a ventilated driver box prevent accumulation of a dust layer impairing thermal management.  
IP65 version is optional.



## FH HIGH BAY

LIFE-LONGER THAN LONGER



### Everlasting bright

IES-TM21 by TUV-SUD shows the lumen maintenance of 80w FH HB Mini, 130w and 300w Aurora high bay at 50,000 hours are a truly incredible consistent output.

AHB-80A	98.98%
AHB-130A	98.95%
AHB-300A	98.58%

From the first time Aurora is switched on, and throughout its service life, the light colour chosen (4000 K, 5000k or 5700 K) will be stable. Aurora meets high colour rendering requirements with levels of up to Ra > 90.

Built-in DALI-dimmable FH HB makes perfect use of the possibilities of lighting control. Controlled lighting solutions save energy and adjust to changing requirements: areas requiring 500 lux for production activities today may make do with 200 lux for storage purposes tomorrow.



**Motion & Daylight dimming is also available on FH HB high bay to maximum the energy efficiency.**





■ DALI DIMMING FH HIGHBAY-OIL TOOL COMPANY GERMANY



***FH Mini 27-80w PC reflector***

A typical low bay with compact housing. PC reflector as standard makes it an ideal luminaire for many commercial place. Family design ensures its outstanding efficiency in lighting and energy.



***FH 200w Al reflector 45°***

Usually needed for space with over 15m mounting height, and 45° Aluminum reflector is mostly used for high mounting Aurora to creat concentrated lighting area.



***FH 100-130w PC reflector***

Right model to replace the traditional 250w metal halide. PC reflectors brings the FH HB nice appearance, and light spread though reflector to the whole space.



***FH 250-300w Al reflector 120°***

If the facility is high-ceiling and the lux requirement is also high (over 500lux), it is the right filed for FH HB 250-300w. 1-10v and DALI dimming are both available for these models.



***FH 160w Al reflector 90°***

Most popular model as it is right to replace the 400w metal halide, which account for 85% traditional industrial lighting fixtures. The 1:1 dimension of heat sink and driver box makes it the most beautiful FH HB.



***FH 350-400w without Reflector***

Like a Sun, powerful and bright. The only choice to replace the 1000w Metal Halide. Big FH HB for Big Project, Mostly serves aircraft industry, logistics and warehousing, shipbuilding and heavy industry.



**FH MINI**

MODEL	FH HB-27A	FH HB-53A	FH HB-80A
SYSTEM POWER(W)	27	53	80
SYSTEM FLUX(LM,5700K)	3,220	6,322	9,542
SYSTEM FLUX(LM,4000K)	2,995	5,880	8,874
NET WEIGHT(KG)	2	2.5	3



**FH PREMIUM**

MODEL	FH HB-100A	FH HB-130A	FH HB-160A	FH HB-200A	FH HB-250A	FH HB-300A	FH HB-350A	FH HB-400A
SYSTEM POWER(W)	100	130	160	200	250	300	350	400
SYSTEM FLUX(LM,5700K)	11,367	14,777	18,187	22,734	28,417	34,101	41,748	47,712
SYSTEM FLUX(LM,4000K)	10,571	13,743	16,914	21,143	26,428	31,714	38,826	44,373
NET WEIGHT(KG)	5	5	5.5	7.5	9	9.5	11	11

\* Lumen output tested by TUV SUD through the method of IES-LM79, based on 4 hours operating with 120degree reflector. FH SOLAR & LED maintains a tolerance of ±5% on power and ±10% on flux measurements.



## FH LED HIGH BAY LIGHT

Chip	Driver	LED Efficiency	System Efficiency
Philips Luxeon M	Philips Xitanium(UL/ ENEC)	140-150LM/W	113.67Lm/W
AC Input	Color Rendering	Color Temperature	Power Factor
220-240V 120-277V	Ra 70 Ra 80	3000K 4000K 5000K 5700K	≥0.95
IP class	Insulation Class	Working Temperature	THD
IP40 IP65	Class I	-40° C ~ 55° C	≤15%
Housing Material	Luminous maintenance	Working Life	Dimming
Anodizing 6063 Aluminum Extrusion	LM80 Approved	50000Hrs at Tj 135° C	DALI 1-10V

And we have another family product for external lighting New FH Flood Light, to be continue...



**NEW FH LED FLOOD LIGHT**

105-520w  
11,832lm-59,160lm





We are  
good energy

[www.fhsolarled.com](http://www.fhsolarled.com)

