

# NEW FH PS FLOOD LIGHT

*Above and Beyond*



# FHsolar&led

We are  
good energy



**121.44** LM/W  
LM79

**99.68%** @ 50000  
HOURS

*Concentrate Spread Inspire*





## NEW FH FLOOD LIGHT

DESIGNED LUMINAIRE, DESIGNED FLUX



### **Design**

New FH Flood Light is millstone product of standard lighting following the Aurora high bay, inherited the design concept and developing experience of FH-HB, the New FH Flood light comes with family appearance style, which is highly recognized. Inside of the ambitious looking is Philips chip and Philips driver as standard in all series. And the precise integration of 20 sets of tooling. This is the unique Vision flood light, the outstanding one.

### **5 years Loyalty with Philips**

The cooperation with Philips is all along the development of Standard Lighting. The use of Philips Luxeon chip and Xitanium driver made it possible to build the New FH Flood Light with very high standards in terms of technical features and design. Moreover, the direct feedback by our existing customers, as well as the Philips' global experience in application helped us meet these requirements in a concept of global product & local care.

**LUXEON** BY PHILIPS LUMILEDS **PHILIPS ADVANCE**



## NEW FH FLOOD LIGHT

PROFESSIONAL, SAFE, PERFORMANCE

### Professional

Born for LED industrial and outdoor lighting, 5 years constant effort in flood light sales and production. Thousands of luminaires in service all over the world. Never before has a manufacturer so focused and experienced.

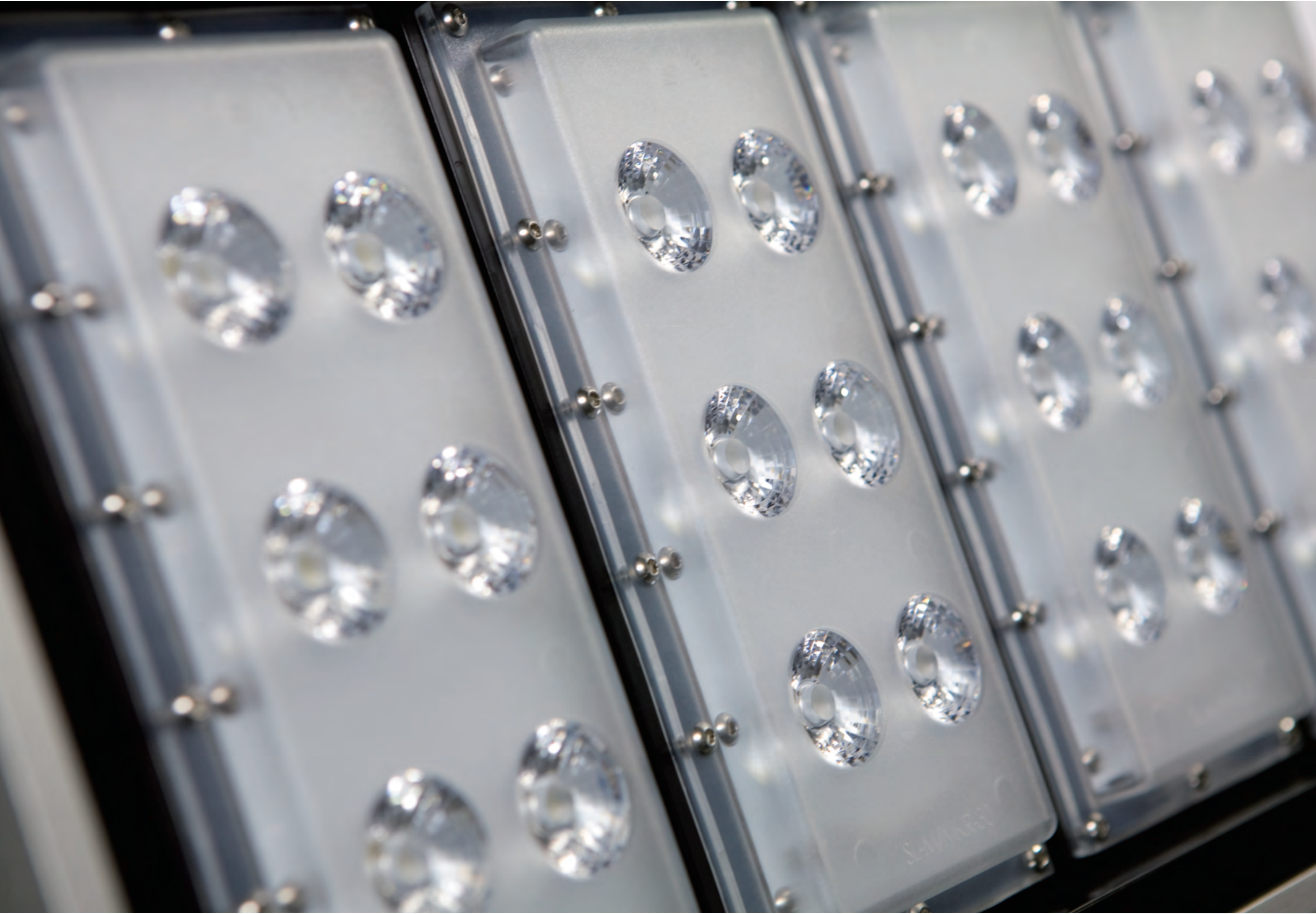
### Safe

As The only manufacturer in China producing ENEC certified LED High bay and LED Flood light, we take safety always the first priority. It starts from the product design, and though along the production, shipment, installation, operation and maintenance.

### Performance

121.44lm/w system efficiency and 99.68% lumen maintenance at 50,000 hours set the impressively high record and standard for outdoor lighting, undisputed King of performance. All measurements are done by the TUV SUD, accurate and reliable.





**NEW FH FLOOD LIGHT**  
SECOND TO NONE IN EFFICIENCY

120 LM/W



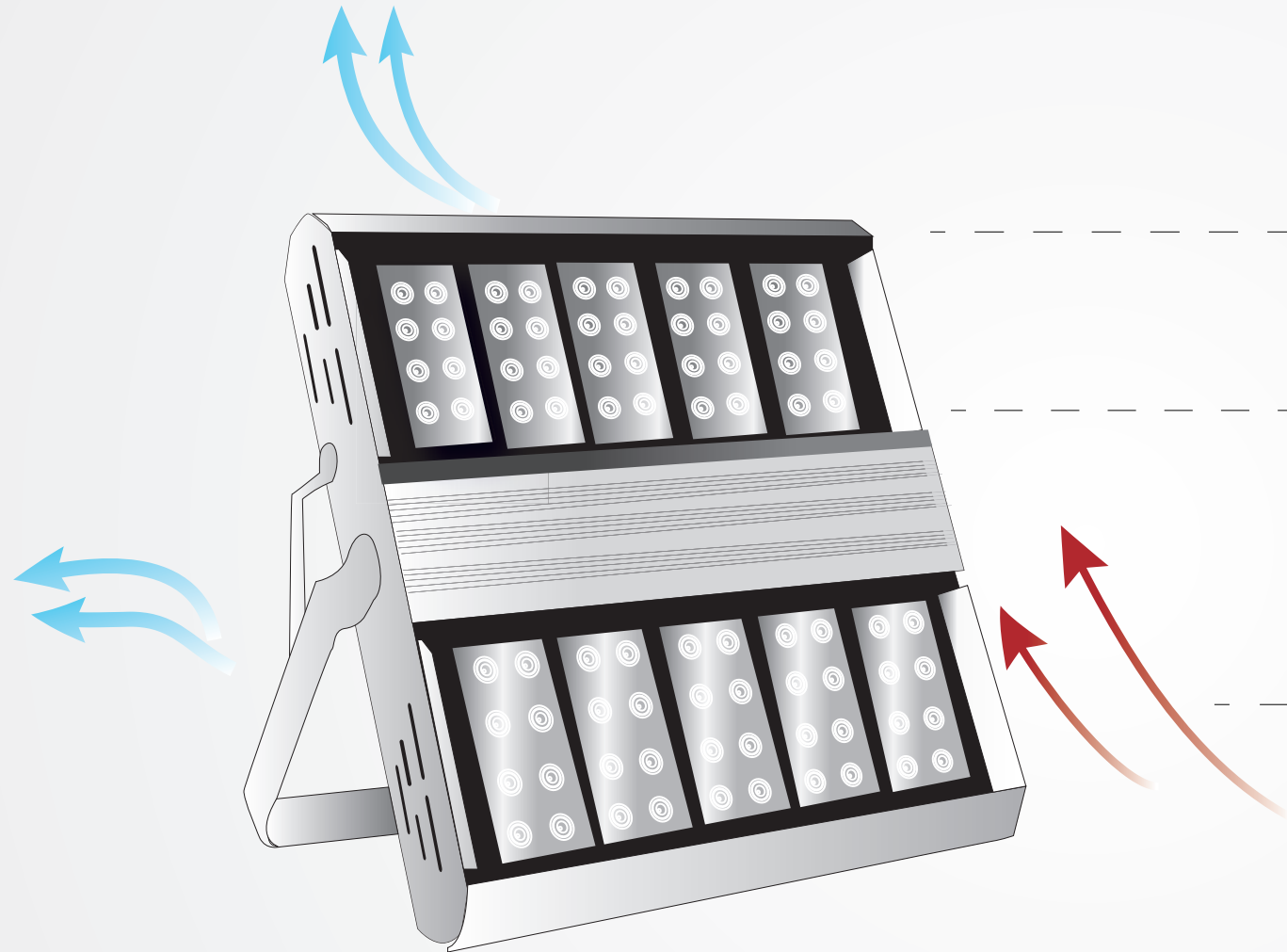
The luminaire's inner workings and appearance have been designed from scratch – this was the only way to make vision flood light achieve its outstanding efficiency level.

With Philips Luxeon M, up to 150lm/w hot efficiency, the best chip for industrial lighting, New FH Flood Light is able to create the zenith of efficiency.

The patent cooling system of New vision is the key point of efficiency miracle. Integrated design, accurate calculation and seamless joint make it possible to happen.

## NEW FH FLOOD LIGHT ULTIMATE

### THERMAL MANAGEMENT



#### **Aluminum extrusion Frame + Cooling System**

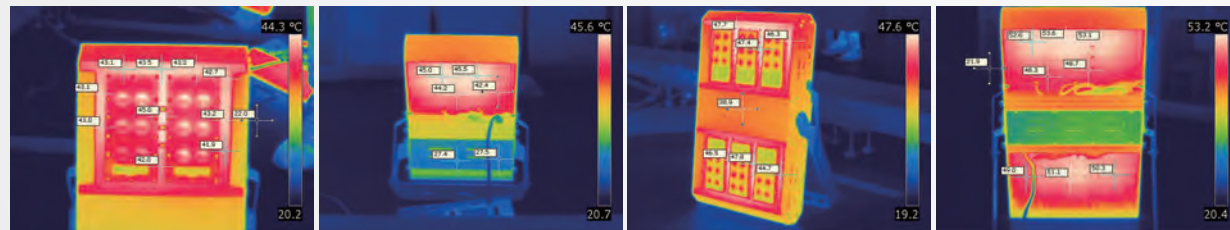
Compared with Die casting and Aluminum Fin, the extrusion is much better in heat dissipation. With Patent design, the extrusion frame gives sophisticated look, and takes part in the cooling work. Extra cooling area more protection and extra-high efficiency.

#### **Unique patent lens**

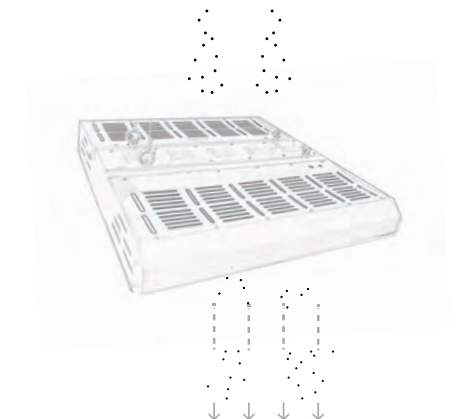
Complex PC lens is special designed and produced for New FH Flood Light. Professional Japanese-imported raw material guarantees the high luminous flux. Various beam angles are available from narrow to wide to meet the requirements of different applications. LEDs are under perfect protection of complex lens in harsh environment thanks to the IP55 design.

#### **Air Flow**

Air flow is an absolute essential element in all standard lighting product under the Performance-oriented develop philosophy. The gap between modules creates the channel for air flow to take away the heat from LEDs. On the other hand, it effectively reduces the air resistance and improves the safety of luminaire mounted at high position.



The circulation of air and a ventilated structure prevent accumulation of a dust layer impairing thermal management.



**NEW FH FLOOD LIGHT**  
INSTALLATION AND APPLICATION



Not just flood light, The New FH is available for different purpose and application by changing the installation way.

***Pendent mounting***

New FH features four symmetrical points for suspension from a cord or optionally from a chain, and can therefore be fixed and adjusted quickly. As a supplementary for standard high bay light, the new vision gives more options for different beam angles and higher output.

***Regular bracket installation***

Fixed at high mast, ceiling, wall and ground, the luminaire is 180° rotatable. For high humidity corrosion environment, such like sea port project, 304 stainless steel bracket upgrade is highly recommended to guarantee the long service life delivery.

More creative and possible installation design are under development.





### NEW FH FLOOD LIGHT

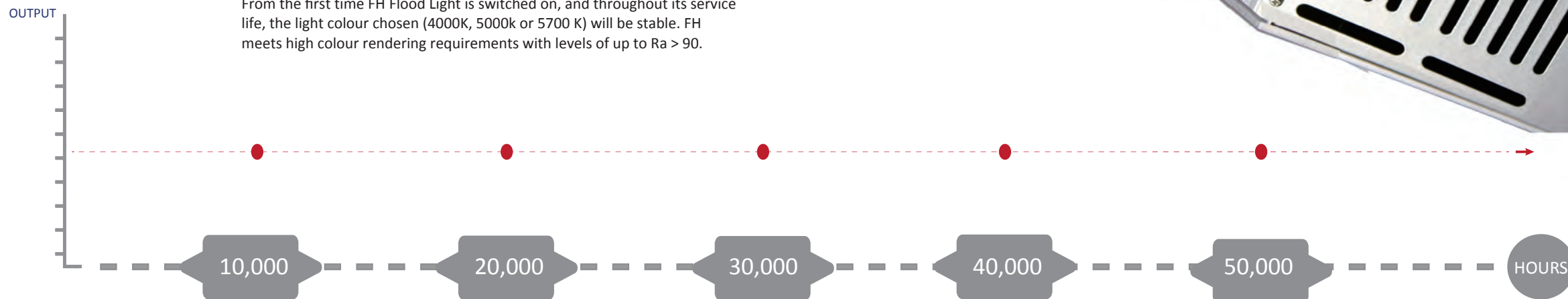
LIFE- 10 YEARS OR MORE

#### Everlasting bright

IES-TM21 by TUV-SUD shows the lumen maintenance of 155W FH Flood Light, 260W and 520W Vision Flood Light 50,000 hours are a truly incredible consistent output.



The long service life of the luminaires is due to several components, starting with a high protection rating of IP55, TUV approved. Thanks to all-round gaskets, neither dust nor humidity can penetrate inside the luminaire.







#### ***FH-PS-FLOOD LIGHT 105A***

The most compact model, up to 120lm/w. Mostly matched with 135\*60degree for architecture lighting. Ideal solution for 250w traditional lighting fixture replacement.



#### ***FH-PS-FLOOD LIGHT 155A***

Right to replace the traditional 400w Metal Halide. 113.65lm/w super efficiency tested by TUV in the method of IES-LM79. It sometimes used as high bay with pendent mounting or tunnel lighting.



#### ***FH-PS- FLOOD LIGHT 210A***

Most popular model with single module arrangement. All different existing beam angles (30°, 60°and 135\*65°) are needed in this model for different application.



#### ***FH-PS-FLOOD LIGHT 260A***

Max power with single module arrangement consist of 5 modules. 109.8lm/w super efficiency with 30° lens, tested by TUV in the method of IES-LM79. driver efficiency is up to 94%.



#### ***FH-PS- FLOOD LIGHT 310A***

Starting model with dual module arrangements. Driver chamber in the middle and separates the heat equivalent at two side. Normally for new construction project, not for replacement. Put into lighting plan from scratch to meet some particular requirements.



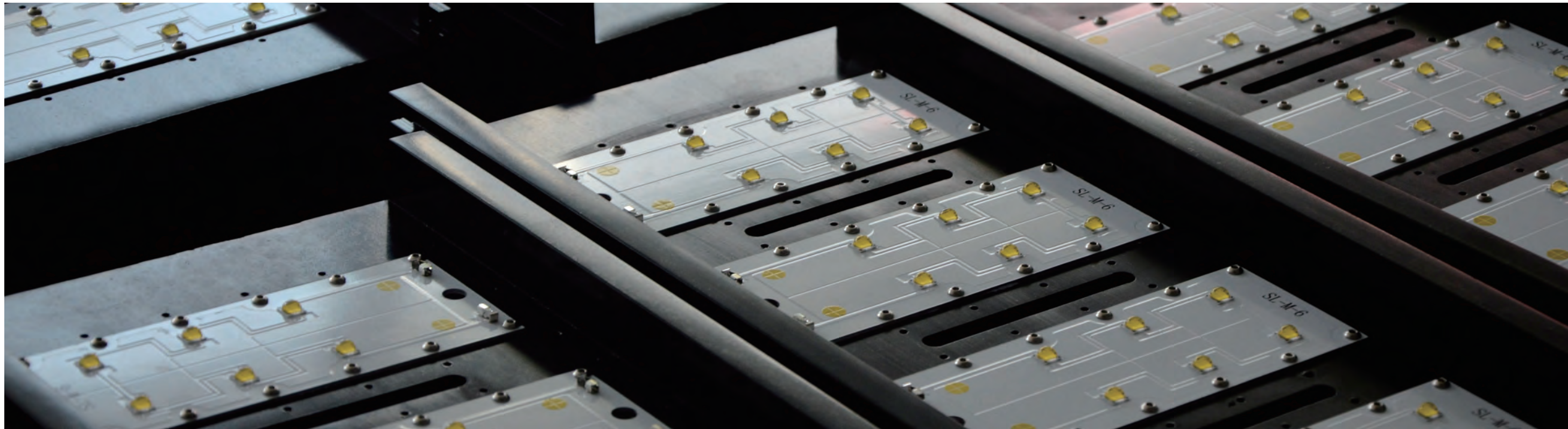
#### ***FH-PS- FLOOD LIGHT 420A***

Narrow beam angle versions are selected due to the far lighting distance. Able to replace 1000w Metal halide in some cases and achieve 60% energy saving. The best seller in dual module arrangements models.



#### ***FH-PS- FLOOD LIGHT 520A***

So far Max power for New FH Flood Light series. Was designed with near 60000lm to replace all kinds of 1000w Metal Halide for large facility, such like sport field, airport, sea port and temple.



## FH FLOOD LIGHT

MODEL	FH-PS-105A	FH-PS-155	FH-PS-210	FH-PS-260	FH-PS-310	FH-PS-420	FH-PS-520A
SYSTEM POWER(W)	105	155	210	260	310	420	520
SYSTEM FLUX(LM)	11,832	17,748	23,664	29,580	35,496	47,328	59,160
NET WEIGHT(KG)	8	10	13	14	17.5	21	23

\* Lumen output tested by TUV SUD through the method of IES-LM79, based on 4 hours operating with 135°60

\* degree. FH maintains a tolerance of ±5% on power and ±10% on flux measurements.

CHIP	DRIVER	LED EFFICIENCY	SYSTEM EFFICIENCY
PHILIPS LUXEON M	PHILIPS XITANIUM	140-150/LM/W	113.67LM/W
AC INPUT	COLOR RENDERING	COLOR TEMPERATURE	POWER FACTOR
220-240V 120-277V	RA 70 RA 80	3000K 4000K 5000K 5700K	≥0.95
IP CLASS	INSULATION CLASS	WORKING TEMPERATURE	THD
IP65	CLASS 1	-40°C — 55°C	≤15%
HOUSING MATERIAL	LUMINOUS MAINTENANCE	WORKING LIFE	DIMMING
ANODIZING 6063 ALUMINUM EXTRUSION	LM80 APPROVED	50000HRS AT TJ 135°C	1-10V

And we have another family product for industrial lighting FH-HB High Bay, to be continue...



**FH-HB HIGH BAY**

27-400w  
3,220lm-47,712lm





**FHsolar&led**

We are  
good energy

[www.fhsolarled.com](http://www.fhsolarled.com)